

# TechnoOptis

Installation Manual

**MEASUREMENT PROGRAM**

---

***MT-100***

Rev.4

# Table of Contents

---


1. Introduction.....	2
2. MT-100 Installation .....	3
2.1. Installation .....	3
2.2. Reinstallation .....	7
2.3. Uninstallation .....	9

## 1. Introduction

This Manual describes the procedure of the MT-100 installer.

### 【Precaution for Installation】

Precautions for installing the MT-100 are as follows.

 <b>Note</b>	<ul style="list-style-type: none"><li>• Logon with the user name entered in one-byte character to proceed with the operation. Logging on with the user name entered in two-byte character may cause the error in the installation.</li><li>• Be sure to use the administrative right-given account to log on the computer for installation. You cannot install the MT-100 without using the administrative right-given account.</li><li>• To install this software, be sure to make the OS in the latest condition once using the Windows Update before installation even if the operating condition is met.</li></ul>
--	--



### Memo

For the connection for the PC, please refer to the instruction manual of your PC.

### – Operating Conditions

Operating conditions recommended for this MT-100 are as follows.

OS	Windows® 10 Pro(32bit／64bit) Windows® 11 Pro(64bit)
CPU	Intel® Core™ i3 2.4GHz or higher ※ In the 64bit, the MT-100 support amd64 only.
Memory	At least 1GB
HDD	At least 1GB
Ports	USB 2.0 port x 1
Display Device	Resolution: 1024×768 or higher
Others	CD-ROM drive
Language environment	English


※ Windows is a trademark and registered trademark of Microsoft Corporation.

※ Intel® is a trademark and registered trademark by Intel Corporation.

## 2. MT-100 Installation

Here, it describes the procedure to install the MT-100.

This installer enables you to newly install, reinstall, or uninstall the software.

 <b>Note</b>	To uninstall the software, be sure to use the provided MT-100 Install CD. Using the procedure of [Control Panel]—[Add/Remove Applications] may not remove the software properly.
--	--

### 2.1. Installation

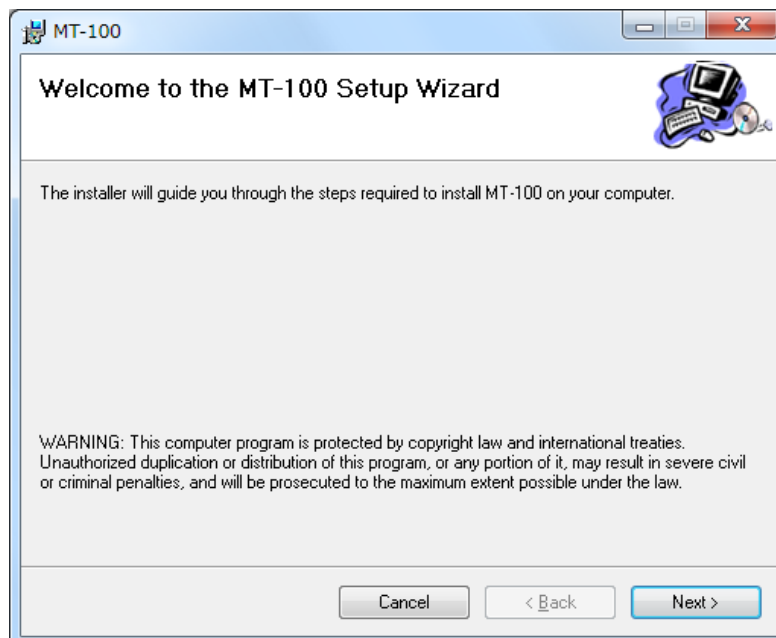
To install the MT-100, go through the following steps.

- 1 Insert “MT-100 Installer” CD-ROM into the CD drive.
- 2 The CD-ROM is set to the drive. Open the CD drive from the Explorer and double-click the [setup.exe] in [MT-100] folder.

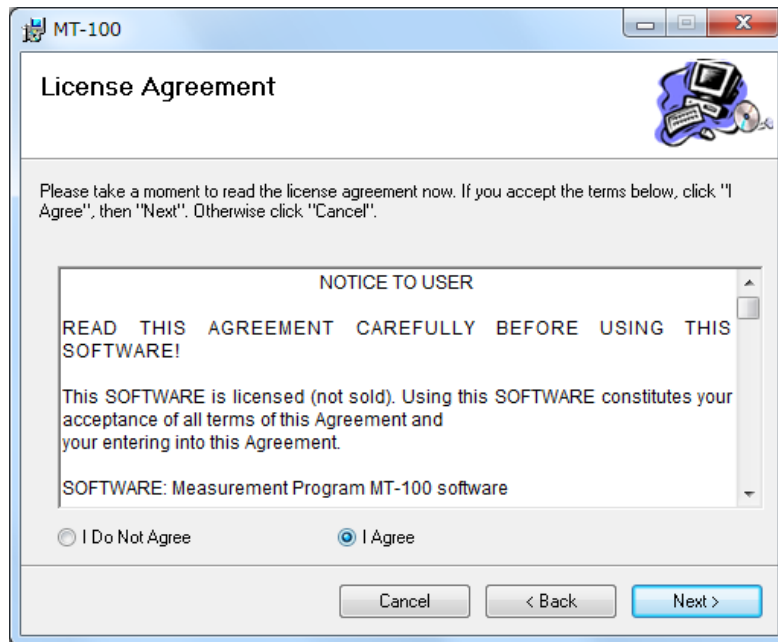
#### Memo

- the [User Account Control] dialog may appear.  
In that case, select [Allow], [Yes] or [Continue].

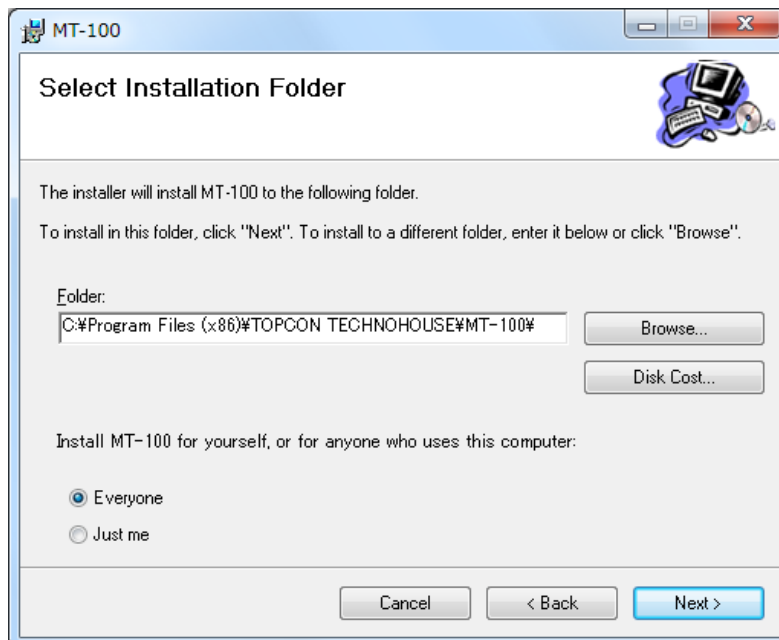
- 3 The following window appears. Click [Next].



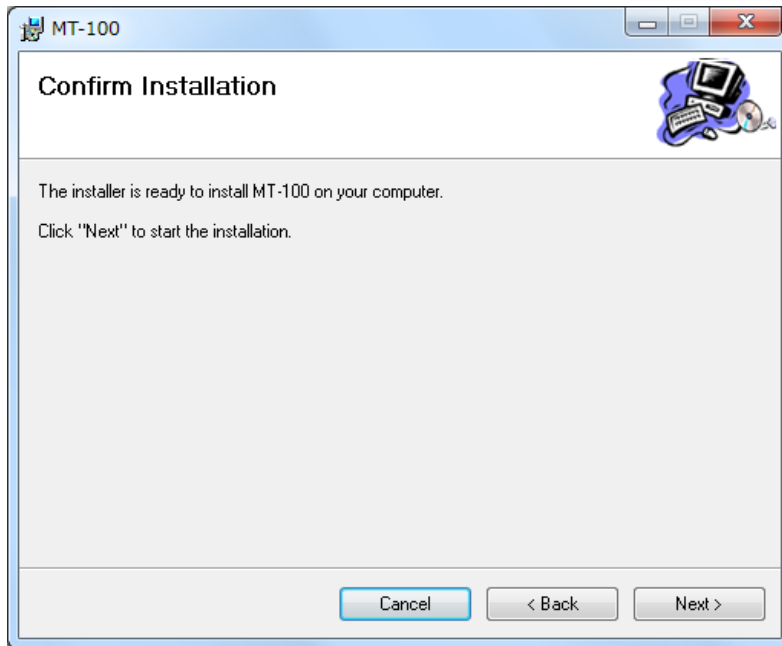
- 4 "Software license agreement for this product" window will appear. After reading the content, if you agree with the items written here, select [I agree] and click the [Next].
- If you don't accept the terms, you cannot continue the installation work.



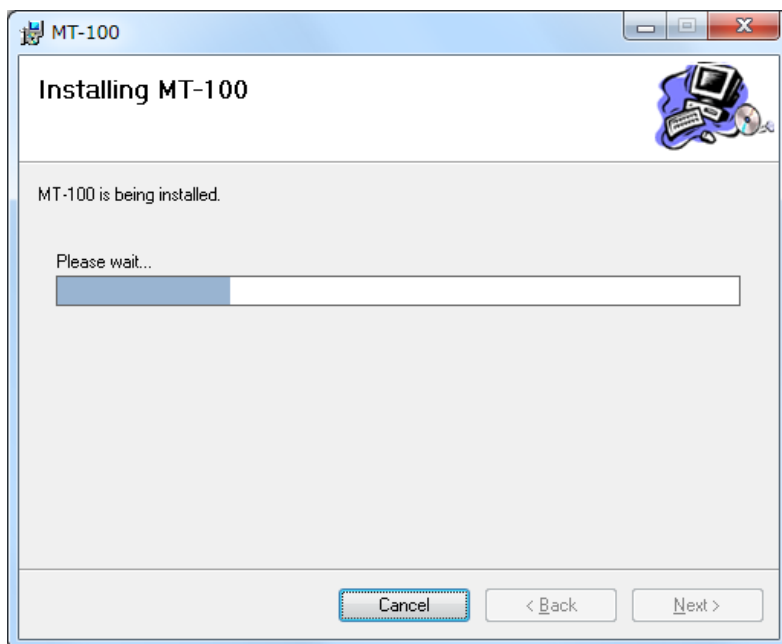
- 5 You can change the installation folder here.
- If you don't change the installation folder, click the [Next].
- To change the installation folder, click the [Browse] to select the installation folder and click the [Next].
- When you install the MT-100 to 64bit PC, the installation folder is created in [C:¥Program Files(x86)¥TOPCON TECHNOHOUSE¥MT-100¥].



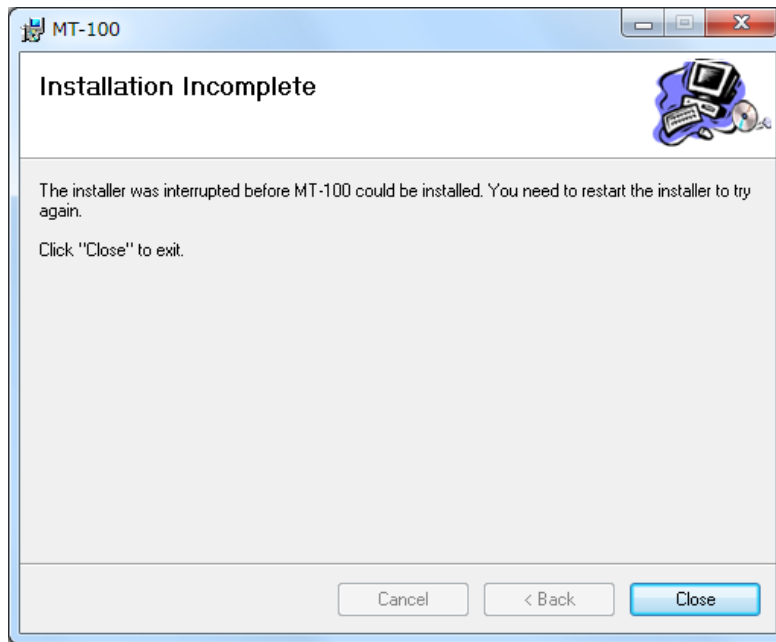
- 6 The following window appears. Click [Next].



- 7 The following window appears.




The installation has been completed.  
Click the [Close] to finish the installation.



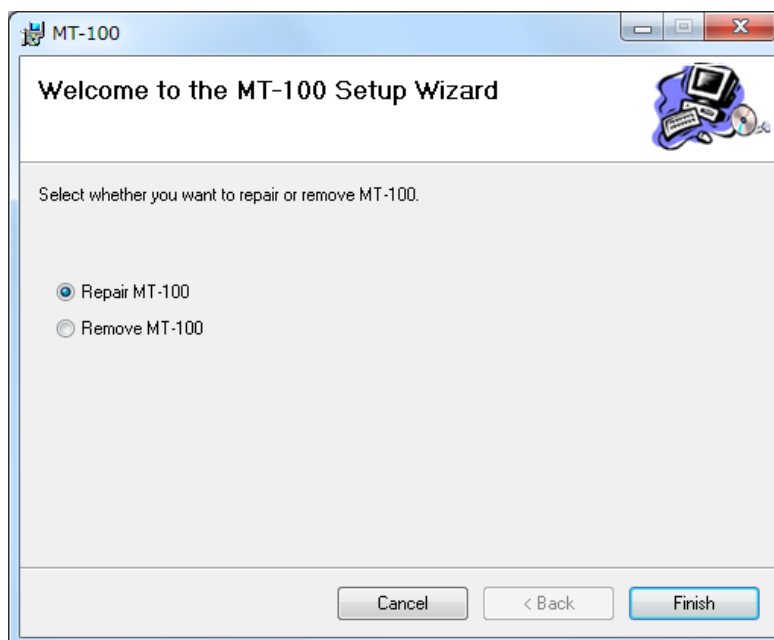
## 2.2. Reinstallation

If you want to rescue a broken file when the MT-100 is already installed, you can rescue the file by performing the reinstallation.

To reinstall the MT-100, go through the following steps.

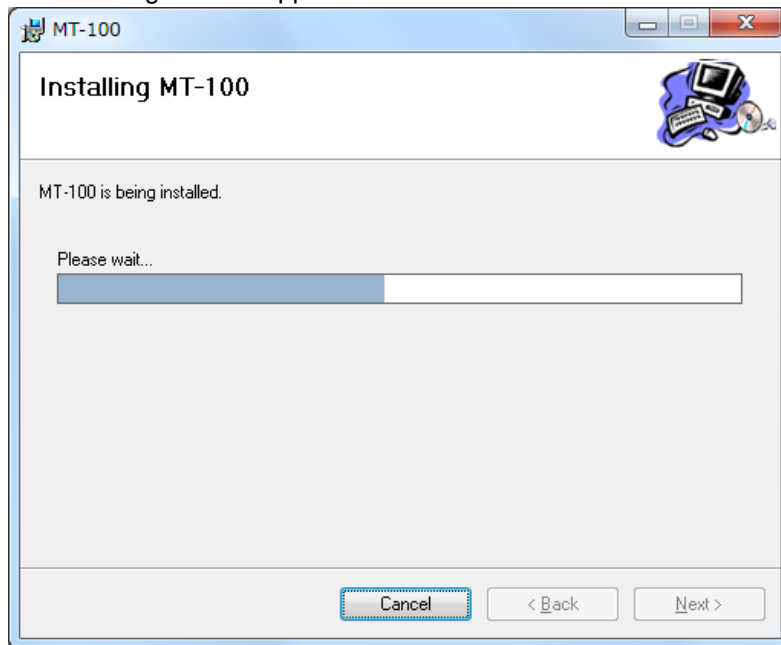
 <b>Note</b>	If the MT-100 is already booted up, be sure to exit the software before performing the reinstallation.
--	--

- 1 Insert "MT-100 Installer" CD-ROM into the CD drive.  
Open the CD drive from the Explorer and then double click [setup.exe] in [MT-100] folder.
- 2 Select [Repair MT-100] on the following window and click [Finish].

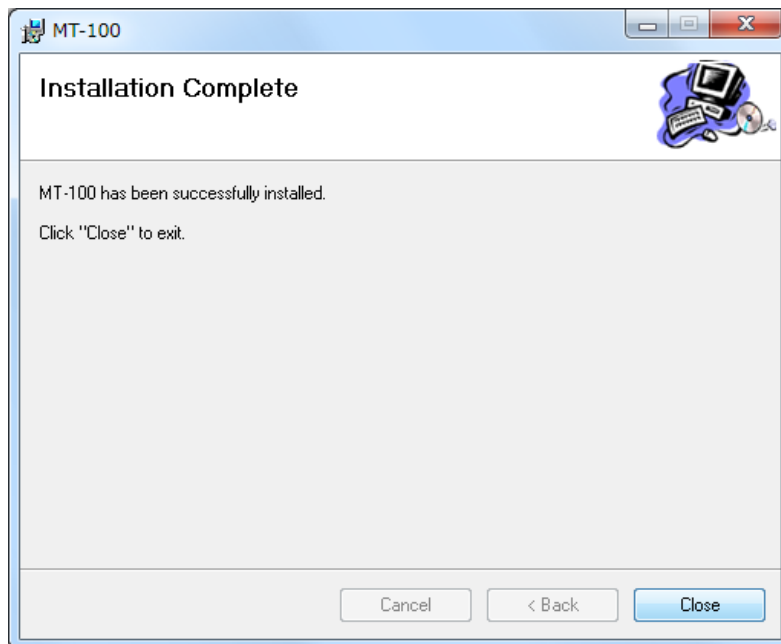




3 The following window appears.




The reinstallation has been completed.  
Click the [Close] to finish the reinstallation.



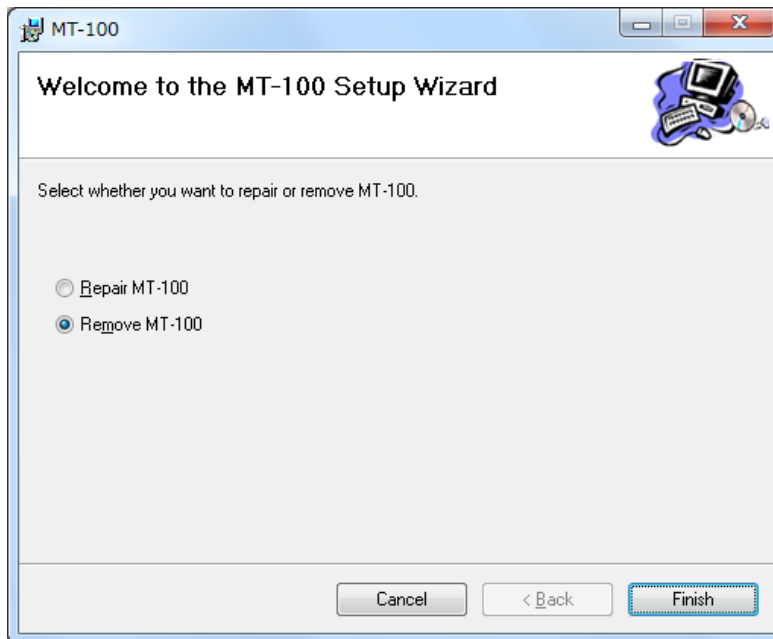
### 2.3. Uninstallation

This function enables you to uninstall the MT-100 from your computer when it is installed.  
To uninstall the MT-100, go through the following steps.

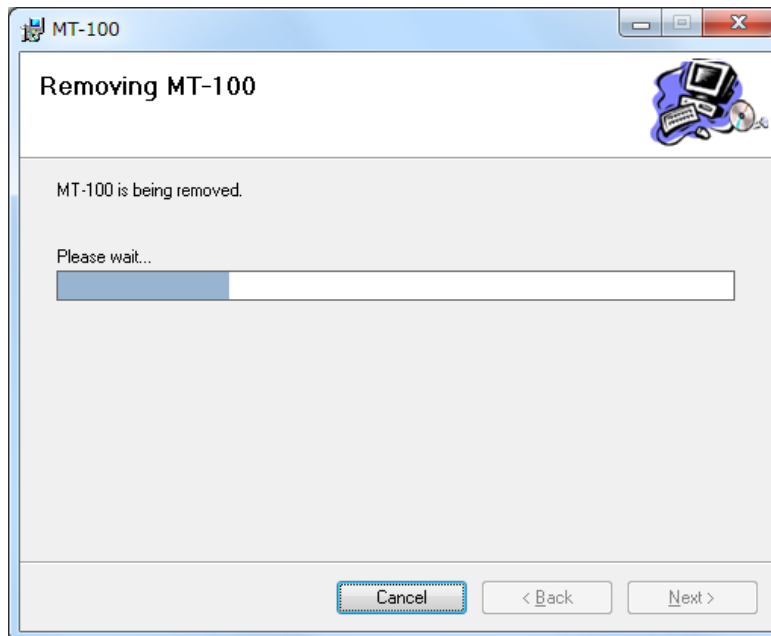
 <b>Note</b>	If the MT-100 is already booted up, be sure to exit the software before performing the uninstallation.
--	--

- 1 Insert "MT-100 Installer" CD-ROM into the CD drive.  
Open the CD drive from the Explorer and then double click [setup.exe] in [MT-100] folder.

- 2 Select [Remove MT-100] on the following window and click [Finish].



- 3 The following window appears.



The uninstallation work has been completed.  
Click the [Close] to finish the uninstallation.

